

Offshore Units Design Catalogue

www.moonpool.com.sg
Established 2003



Offshore units – “In house designs”

Drilling Swamp Barge SB104 Type “YANI”



Slotted Submersible Barge

Water depth: 25 ft (7.6 m)

Accommodations: 102 beds

Classification: BV

*Design licenses are available for construction at selected shipyards.
Design variations to suit client requirements are also available.*

Offshore units – “In house designs”

Drilling Swamp Barge SB103 Type “RAISSA”



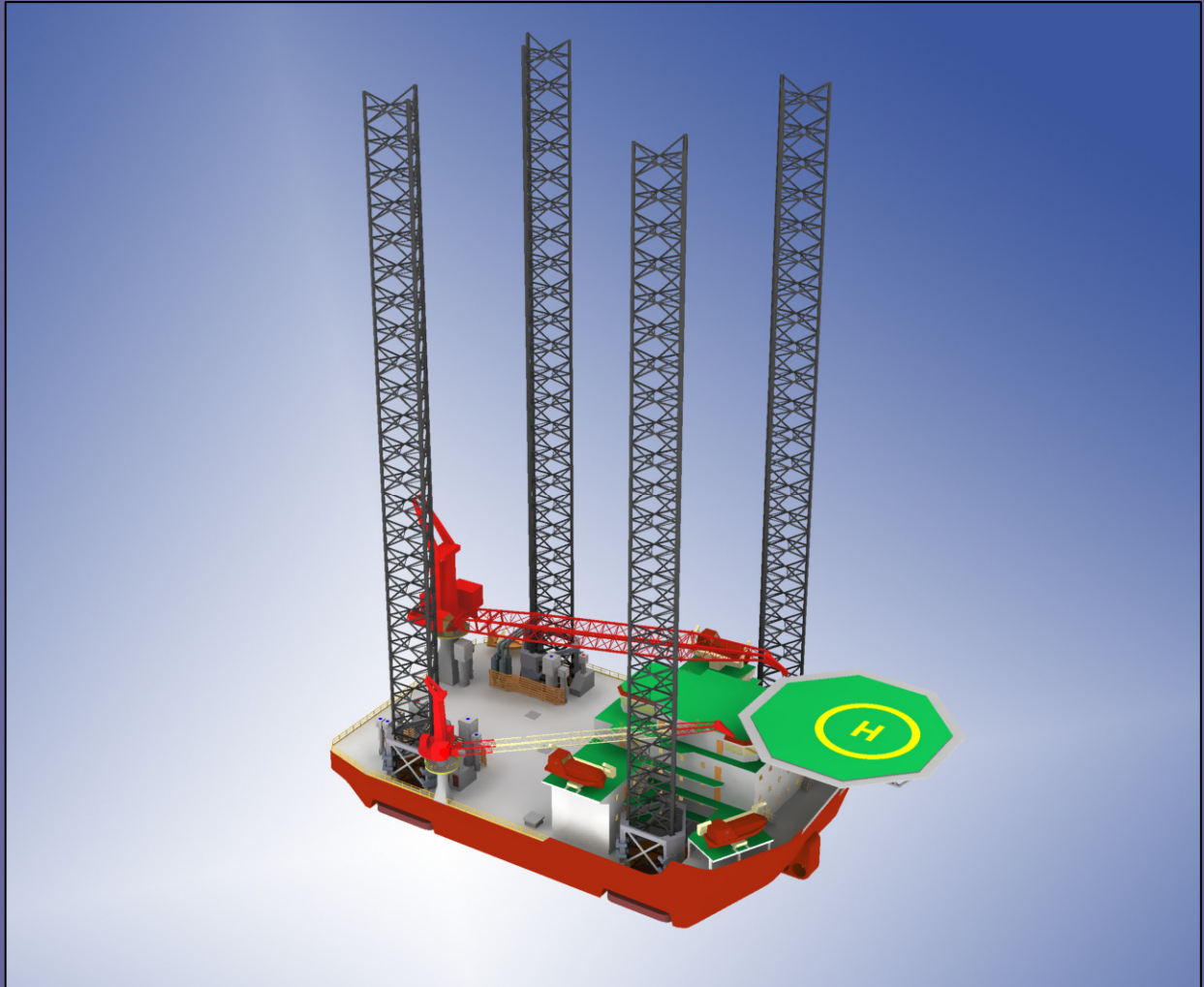
Heavy Cantilever Submersible Barge

Water depth: 25 ft (7.6 m)
Accommodations: 110 beds
Classification: BV

*Design licenses are available for construction at selected shipyards.
Design variations to suit client requirements are also available.*

Offshore units – “In house designs”

Bigfoot liftboat MPJ 328 BUFFALO Class



Multipurpose self-propelled
self elevating unit

Water depth: 245 ft (75 m)
Accommodations: 160 beds
ABS MODU Rules

*Design licenses are available for construction at selected shipyards.
Design variations to suit client requirements are also available.*

Offshore units – “In house designs”

KJU-TIGER Class



High performance drilling jack-up

Water depth: 400 ft (122 m)

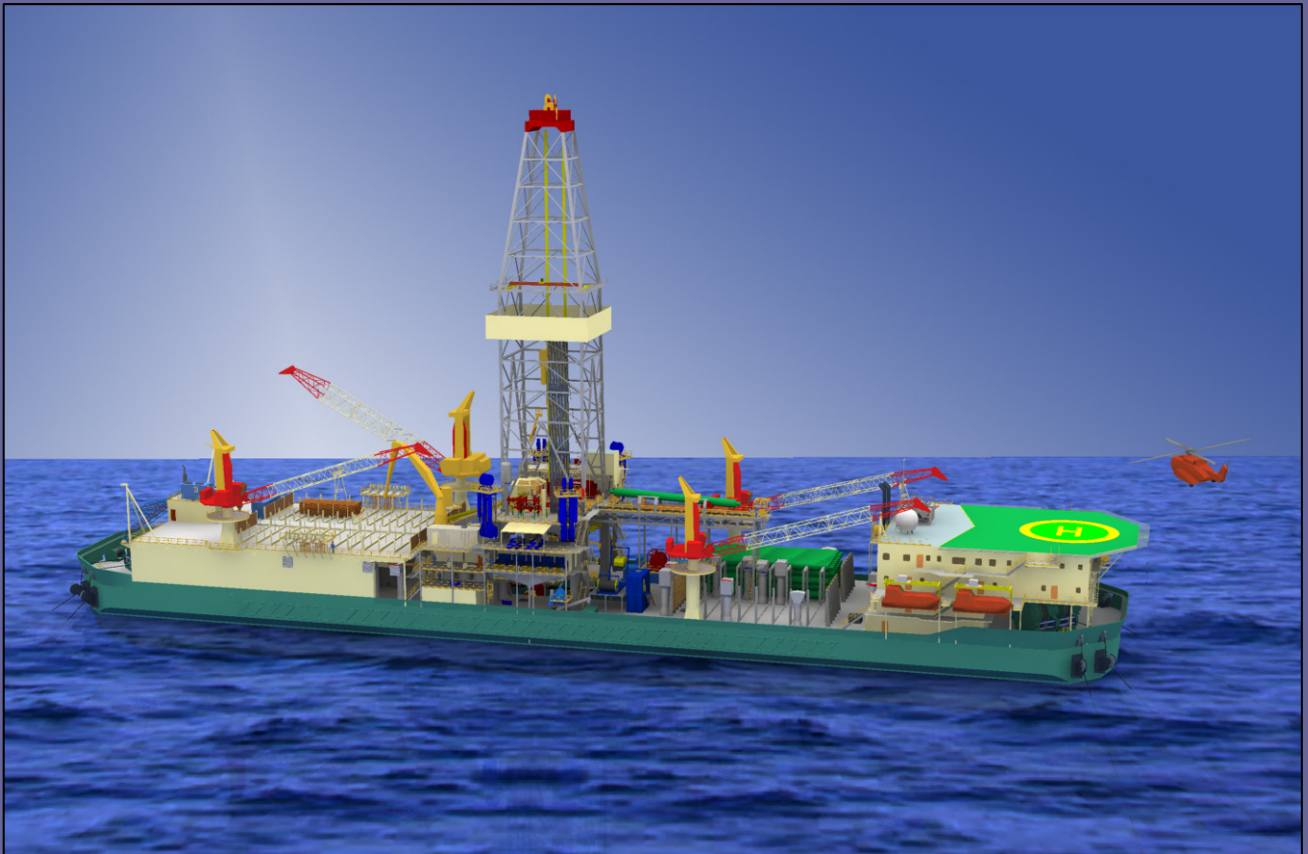
Accommodations: 150 beds

Classification: ABS

*Design licenses are available for construction at selected shipyards.
Design variations to suit client requirements are also available.*

Offshore units – “In house designs”

EQUATORIAL DRILLER ED-168



Deepwater drilling unit

Water depth: 6,000 ft (1828 m)

Accommodations: 136 beds

Classification: BV

*Design licenses are available for construction at selected shipyards.
Design variations to suit client requirements are also available.*

Offshore units – “In house designs”

TROPICAL DRILLER TD 7000



Ultra-deepwater DP3 Compact Drillship

Water depth: 7,000 ft (2130 m)

Accommodations: 160 beds

ABS MODU Rules

*Design licenses are available for construction at selected shipyards.
Design variations to suit client requirements are also available.*

Offshore units – “In house designs”

UNIMOPU



Self-Installing Production Platform

Water depth: Up to 110m (360 ft)

ABS Rules

*Design licenses are available for construction at selected shipyards.
Design variations to suit client requirements are also available.*

Offshore units – Design Variations

Pacific Class 375 “SOEHANAH” & “EMERALD DRILLER”



Modified Pacific Class 375 Jack-up rig
Water depth: 375 ft (114 m)
Accommodations: 112 beds
Classification: ABS

Offshore units – Design Variations

LeT Super116E “EXPLORER 1”



Modified LeTourneau Super116E
Jack-up rig

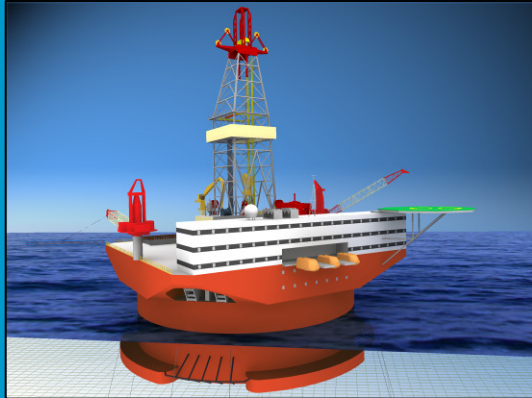
Water depth: 350 ft (107 m)

Accommodations: 120 beds

Classification: ABS

Offshore units – Conceptual designs

OSSR - CS



Omni-directional Semi-Submersible rig
specially designed for Caspian Sea

Water depth: 3,300 ft (1000 m)
Accommodations: 150 beds
ABS MODU Rules

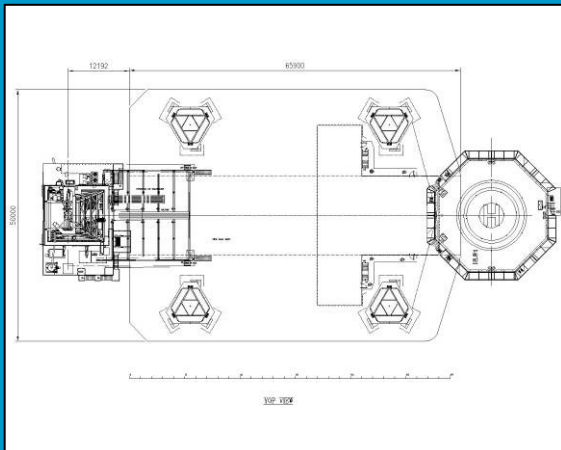
TD 7000 WI



DP3 Well intervention vessel

Water depth: 7,000 ft (2130 m)
Accommodations: 160 beds
ABS MODU Rules

Shallow Water Jack-up



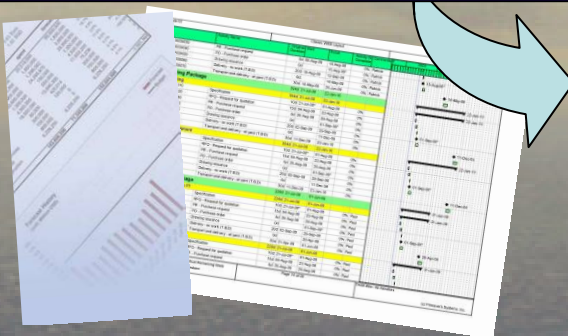
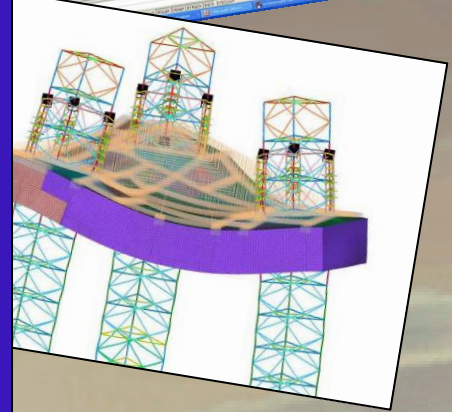
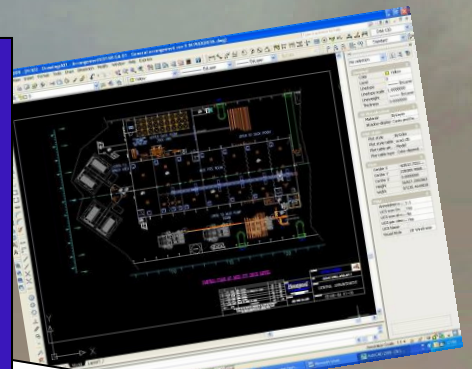
Intended for drilling in shallow waters
of the Persian Gulf

Transit draft 3.0 m
Leg length 60 to 100m
Accommodations: 100 beds
ABS MODU Rules

Our Services...

Engineering – Basic Design New build & conversion

- Design criteria definition
- Concept / vessel arrangement:
 - Hull
 - Living quarters
 - Drilling equipment & mud process
 - Machinery / Power generation
- Marine & structure analysis:
 - Stability & weight analysis
 - Structural design
 - Mooring / riser analysis
- Equipment sizing, specifications
- Piping systems design
- Electrical systems design



Construction Preparation

- Budget estimation
- Vendors / shipyard quotation
- Shipyard scope of work development
- Drafting of construction standards / specifications
- Procurement of equipment

Construction Phase

On site **supervision** as owner representative

- Project management
- Interface management
- Budget follow up
- Progress monitoring & reporting / planning
- Management of suppliers & sub-contractors
- Construction follow up
- Drawing review and approval
- Solving technical issues on a day to day basis
- Liaising with class society
- Engineering support
- Commissioning supervision



*From Basic design
to delivery !*

Moonpool
Rig Design & Construction



Contact:

Olivier Chapuis: olivier@moonpool.com.sg

www.moonpool.com.sg

Office Address:

1, Pemimpin drive
#09-03 One Pemimpin
Singapore 576151